

## QuickView 2.0 Installation



**Step 1**  
Insert CD1 into your CD drive. The CD will automatically run. Click on the option that says **Run Autorun.exe**

**Welcome to the new QuickView 2.0. Please follow these simple instructions for easy installation**

**QuickView Support Team**  
**0115 964 5910**  
**qv@hentonandchattell.co.uk**

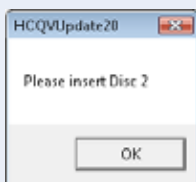
## Updating Previous Version



**Step 2**  
Click **Upgrade**



**Step 3**  
An update box appears, click on **Start Updating**



**Step 5**  
Once CD1 is installed you will be asked to insert CD2. The programme will continue to install. Once the installation has completed click **OK**

## New Installation



**Step 2**  
For a new installation click **New Install**

**Step 3**  
Follow the install wizard by clicking **Next** until you get to the last screen then click **Finish**



**Step 4**  
Once the installation has completed, a QuickView icon will appear on your desktop. Double click on the icon and a setup box will appear

**Step 5**  
Insert CD2, you will then need to call QuickView Support to receive a Keycode to unlock the programme

**Step 6**  
Once QuickView is up and running. Call QuickView support with your account number to set up QuickLink

## New for QuickView 2.0



**1** New manufacturers added - Asuka, Countax, Honda, Ibea, MowBot and Ryobi

**2** Bosch, Atco and Qualcast are shown as individual franchises

**3** New Honda Quick Reference Guide

**4 Machinery look up system**  
Full product pages  
Product images  
Full specifications

**Updates for all other manufacturers**

**5 QuickLink**  
Machinery ordering/enquiry  
Order tracking  
Change delivery address  
Change delivery instruction

*The Finest Cut of All* **ATCO**

**Your first choice for Atco ...**

**Henton & Chattell**  
MORE STOCK | FASTER DESPATCH | COMPETITIVE PRICING

Main Page QuickLink **5** Machinery Info System **4** Machinery Info

# Honda Quick Reference Guide

**Honda Power Products**

Type model number e.g. HR536

Type frame number e.g. MZCG

Description

Model	Description
HR173PDE/L JAPAN	MA2R-100000 LY2 (
HR173SDE	GV100K1-2000001 LY
HR17PDE	HR17-1000001 PDN I
HR194K1, 5ML/SXE - FRANCE	VA5-800000 GY2/GY
HR194PE	GVY120-1000001 FE
HR21SE	1000000 SF GV150
HR21SXE	1000000 DXF GV150
HR&536HXE	MZAN-S100001 MY5
HRB423K1 PDE	MZBC-6100001 MY1
HRB423K1 SDE	MZBC-6100001 MY1
HRB423K1 SVE	MZBC-6100001 MY2

**Machinery Info System**

- 1 Search for models using either:  
Model name e.g. IZY  
Model number e.g. HR173SDE
- 2 Search for models using:  
Chassis number e.g. MA2R

4 New parts photos for easy identification

5 Quick reference for popular Honda parts

# QuickView Machinery

QuickView Machinery holds over 1,500 machines with product specifications, images, photos, full features and selling benefits

## Search Facilities

- 1 Search By Category - This enables you to narrow down your search i.e. Lawnmowers, Brushcutters etc
- 2 Search By Brand - This will select different models for a particular brand i.e. Flymo or Stihl
- 3 Search By Description - Here you can type in anything that will appear in the description i.e. Izy, Roller or Petrol
- 4 Recently Viewed - Search through your recently viewed machines
- 5 Picture Images - Click on either the logo or image in the centre of the screen

1 Search By Category

2 Search By Brand

3 Search By Description

4 Recently Viewed

5 Picture Images

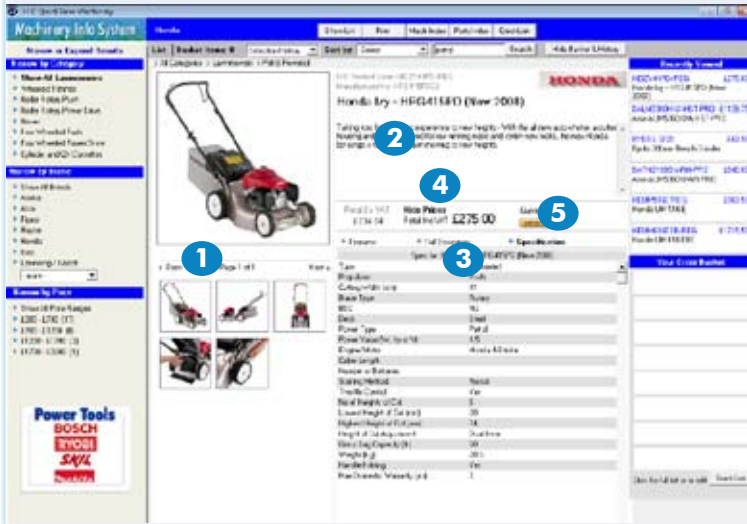
1 Sort models by:

2 With 'Your Order Basket' you can keep track of the machines you have placed on the QuickLink order form

3 Navigate by different pricing bands. e.g. £100-£200

- 1 Sort models by:  
Top Sellers  
Price high to low  
Price low to high  
Models A-Z  
Models Z-A
- 2 With 'Your Order Basket' you can keep track of the machines you have placed on the QuickLink order form
- 3 Navigate by different pricing bands. e.g. £100-£200

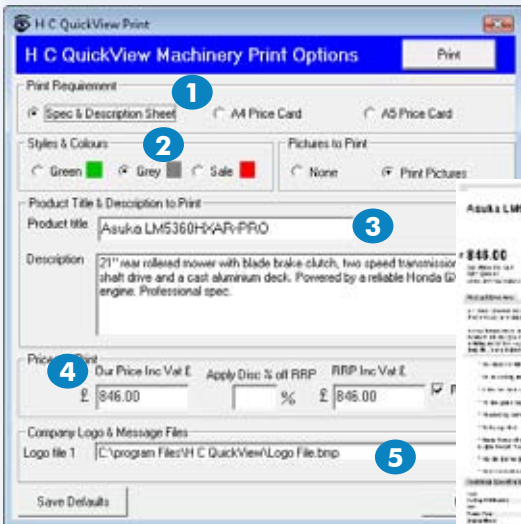
## Product Pages



Once you have found the machine you are looking for click on the image and a full product page will be displayed

- 1 Large product image with smaller detailed images available. To view full screen simply click on them once
- 2 Full manufacturer description for the selected product
- 3 Full product specification available as well as features
- 4 Retail price Inc Vat and Ex Vat shown. You do have the ability to hide prices, simply click on 'Hide Prices'
- 5 Add products directly your QuickLink order form

## Printing Product Leaflets

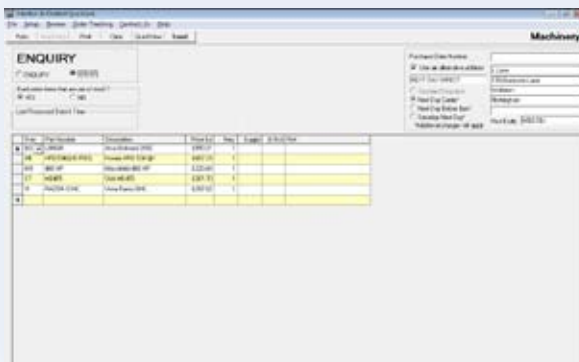


QuickView 2.0 allows you to print Point Of Sale cards for all the machines listed

- 1 Choose the size of the printout, A4 or A5
- 2 Choose the colour: green, grey or a red sale leaflet
- 3 Change the title that appears on the leaflet
- 4 Decide on your Point Of Sale price, apply discount or even take off the prices altogether
- 5 Add your own Company logo

You can create a company logo of 1116x111 pixels. Call the support team for help with this.  
**0115 964 5910**

## New for QuickLink



All machines Henton & Chattell supply can be ordered through the QuickLink programme. You can either find the machine with Machinery QuickView or simply enter in the machine part number and send it as an order

## Cost Price

Part Number	Description	Price Ex	Req	Supply	B/Ord	Cost £
DG L0000	NLA BALMORAL 20	£660.21	1	0	1	£637.05
HE HR053624-REG	2T ROTARY 5.9HP	£867.23	1	1	0	£700.72
MO #804P	#4 STEEL BLS	£220.43	1	1	0	£163.12
ST MB455	NLA MIXING MOWE	£361.70	1	0	1	£253.19
VI RAZDR/2 MC	RAZDR/2 MC	£297.02	1	0	1	£237.61

- 1 You can now see your cost price once you have sent an enquiry or order. This option can be turned on or off as required. Simply click on **Setup, Manual Price Changes**, then un-tick the box 'Show cost price'

## Change Delivery Address

1 You can change the delivery address to send direct to your customer. Simply tick 'Use alternate address' and type the full name and address of where you want the order delivered

2 You can decide how you want your order to be delivered:

- Standard despatch
- Next day carrier
- Next day before 1pm
- Saturday next day

**QuickPart**

Purchase Order Number: [ ]

Use an alternative address

NEXT DAY DIRECT

Standard Despatch

**QuickPart**

Purchase Order Number: [ ]

Use an alternative address

STANDARD

Standard Despatch

Next Day Carrier\*

Next Day Before 1pm\*

Saturday Next Day\*

Shipping address for orders:

Your orders will be shipped to your standard account delivery address. To specify a different address, tick 'use an alternative address.'

Mr J Lane

155 Bramcote Lane

Wollaton

Nottingham

Post Code: NG8 2QA

**Anything outside your Standard Despatch will incur an extra carriage charge**

## Order Tracking

Setup Review Order Tracking Contact

Machinery View

Download

With QuickView 2.0 you can keep track of every order you place. Simply click on **Order Tracking** then **Download** and QuickLink will give you the status of all orders you currently have with us.

QuickLink Order Tracking

Display by: Order header summary Product order lines

Show type of product: Machinery

Status of order: All Outstanding Completed Backorder

Order No	Dated	Status	Ship to
3226	01/02/2008	P 1 ready for despatch	13 BRIDGE STREET
DL:	31/01/2008	P 3 out for delivery/delivered	13 BRIDGE STREET
DL:	31/01/2008	P 4 out for delivery/delivered	13 BRIDGE STREET
3222	30/01/2008	P 1 out for delivery/delivered	13 BRIDGE STREET
3219	30/01/2008	P 1 On backorder	13 BRIDGE STREET
DL:	29/01/2008	P 1 out for delivery/delivered	13 BRIDGE STREET
DL:	29/01/2008	P 1 out for delivery/delivered	13 BRIDGE STREET
	29/01/2008	P 1 out for delivery/delivered	13 BRIDGE STREET
	29/01/2008	P 1 out for delivery/delivered	13 BRIDGE STREET
	29/01/2008	P 1 out for delivery/delivered	13 BRIDGE STREET
3213	28/01/2008	P 1 out for delivery/delivered	13 BRIDGE STREET
DL:	28/01/2008	P 1 out for delivery/delivered	13 BRIDGE STREET
DL:	28/01/2008	P 1 out for delivery/delivered	13 BRIDGE STREET
3216	28/01/2008	P 1 out for delivery/delivered	13 BRIDGE STREET
DL:	28/01/2008	P 1 out for delivery/delivered	13 BRIDGE STREET
DL:	28/01/2008	P 1 out for delivery/delivered	13 BRIDGE STREET
DL:	26/01/2008	P 1 out for delivery/delivered	13 BRIDGE STREET
DL:	25/01/2008	P 1 out for delivery/delivered	13 BRIDGE STREET
DL:	25/01/2008	P 1 out for delivery/delivered	13 BRIDGE STREET
DL:	24/01/2008	P 1 out for delivery/delivered	13 BRIDGE STREET

1 This list shows every part and machinery order that you have with us, whether you have used QuickLink, phone, fax or email

2 It will show you the status of each order whether its being picked, ready for despatch or completed. You can search through these categories to make it easier to find specific orders

3 You can also search for particular orders using, order number, postcode, reference number, name of customer or delivery address

Once you have found the order you can get all the information you require:

1 Exactly what was on the original order, part numbers, descriptions and the status of the order

2 The date and time the order was received, how you asked for the order to be despatched and the delivery address you specified

3 You can see the advice note number, invoice number and the consignment number, meaning you can easily locate the order with the carrier

QuickLink Order Tracking

Your Purchase Order: QL

Order Received: 31/01/2008

Shipping Instruction: MO-W/E-W/R-W

H & C Order No: 19492

Status: 4 out for delivery/delivered

Ship to address: Mowers R Us  
13 bridge Street  
Nottingham  
NG9 3AP

Product No: BP278035

Description: GASKET-BREATHER

Line added: 31/01/2008

Quantity: 1

Status: out for delivery/delivered on 00401454

Advice note: 60406 31/01/2008

Invoice number: 00401454 31/01/2008

Retail Ex Vat: 1.8

Despatched by: TARGET 4

Received: 00:00:00

Inserted	Product	Description	Qty	Advice	Invoice	Status
01/02/2008	R400900413	CABLE CLUTCH	1	61077		ready for despatch
31/01/2008	MO81003801/1	CREW/CORD GUIDE	1	60442	00401455	out for delivery/delivered or
31/01/2008	MO22110312/0	HUB CAP-GREY 170MM	2	60442	00401455	out for delivery/delivered or
31/01/2008	MO22060212/0	BELT GUARD	1	60442	00401455	out for delivery/delivered or
31/01/2008	BP692237	GASKET-D-HAUST	1	60406	00401454	out for delivery/delivered or
31/01/2008	BP278035	GASKET-BREATHER	1	60406	00401454	out for delivery/delivered or
31/01/2008	BP2725545	GASKET-INTAKE	1	60406	00401454	out for delivery/delivered or
31/01/2008	BP2721635	GASKET-CYLINDER	1	60406	00401454	out for delivery/delivered or
30/01/2008	CA81000668/0	CABLE (FRANCE)	1	59749	00401452	out for delivery/delivered or
30/01/2008	HP17220-20H-810	Case	11	1		On backorder
29/01/2008	CA25601584/0	PULLEY	4	58377	00399445	out for delivery/delivered or
29/01/2008	CA84100900/0	BLADE	1	58300	00399446	out for delivery/delivered or

**QuickView Support Team**  
**0115 964 5910**  
**qv@hentonandchattell.co.uk**